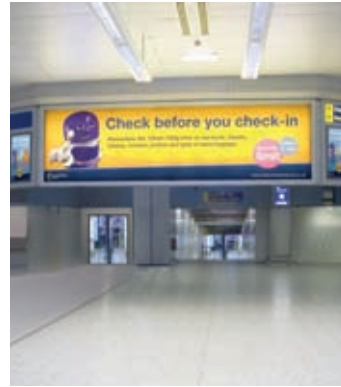
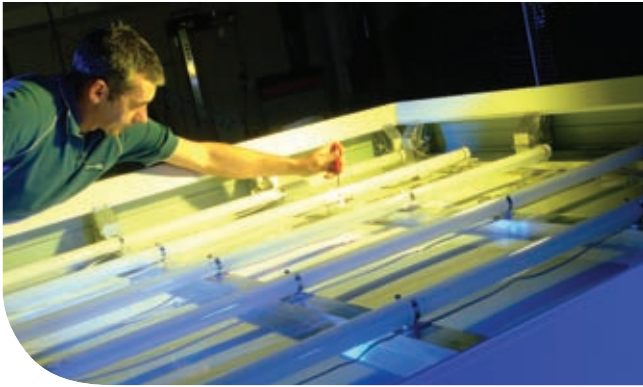


flexfast



Developed in-house, the innovative Flexfast back-lit box is a robust signage system that offers you simple installation and maintenance, providing one of the quickest and most accurate tensioning systems available.

“ We like the Flexfast back-lit boxes because the tensioning system is very good as it can be adjusted to individual requirements says Rainbow Signs & Maintenance’s Kevin Robinson. “They give a brighter and sharper image and are also simpler to fit compared to acrylic panels. ”

Kevin Robinson
Rainbow Signs & Maintenance

“ In comparison with other leading back-lit box units Flexfast is much simpler to use. Side panels are removed quickly and access is gained to the face tensioning system very easily, which means that faces can be changed rapidly. ”

Ben French
Tara Signs

Improved Design

There are two box systems available; the Flexfast Standard and Flexfast Light, both are suitable for all square and rectangular applications. External mitred corners for canopy and fascia signs are available.

Accurate Tensioning

Installation time savings of 50% are easily achievable by you. The simple tensioning system is designed for speed and can be used with power tools to produce a smooth wrinkle-free face.

Low Maintenance

Removable cover plates are positioned on all sides of the sign box to ensure you have easy access to all electrical components, with no disturbance of the face. This means that maintenance becomes a quick and easy process for you.

Even Illumination

The box has been designed to allow optimal spacing between the tubes and face resulting in bright and consistent illumination.

Robust Structure

Each sign is extremely durable with strength in-built into its design, which enables each box to withstand severe weather conditions.



William Smith
established 1832



This leading back-lit box system offers you many advantages including an efficient fabrication method, simple installation and straightforward maintenance.

Units can be manufactured and supplied to you within days ensuring tight deadlines can be met.

Flexfast is suitable for many types of promotional back-lit signs and awnings for interior and external use; typical applications include petrol station forecourt canopies, shop fascias and other advertising sites.



“ We have been using Flexfast units for the past year and have found them suitable for the size of sign panels we require. The extruded aluminium sections are of a very high quality and the single piece flexface is problem free and a distinct advantage over traditional Perspex panels. ”

Jim Bradford
Taylor Signs

“ The Flexfast system is significantly better than acrylic faces from the point of view of both appearance and safety. It doesn't expand and there are no joins where wind can get in and blow the face out. The illumination is very good and the quality of graphics from William Smith is excellent. We know we can rely on both the product and William Smith. ”

Henry Clark
Lofthus Signs & Engraving Ltd

The Complete Package

All Flexfast units are available as illuminated or non-illuminated boxes and can be bought as a finished unit, in full lengths of extrusion or in a ready-to-assemble kit form.

Sign Box

Flexfast has been purposely designed to provide accurate tensioning and simple maintenance. Cover plates are used on all sides of the box to enable easy access to all electrical components. Each finished box may be supplied with or without electrics and a fitted flexible sign face, as well as stove enamelled to any RAL or BS colour.

Flexible Face

Flexible face materials are available as roll goods, ready to apply, or as part of the finished unit and include Panaflex 945 and Seemee IV (formerly Ultralon IV). The materials are supplied off the shelf in full or part rolls. Faces may be printed, sprayed, painted, air brushed or applied with self-adhesive films.

Graphics

Flexible face graphics can be manufactured using translucent or opaque materials for short or long term applications. Graphics can be supplied with up to 10 year warranties for external applications.

Service

Assembly and tensioning instructions for the box are available upon request. Further details on measuring and cutting the vinyl face correctly can also be provided. If you require after sales advice our knowledgeable staff are here to help.

Components

All parts of the Flexfast box may be supplied as individual components if required. We can supply each unit with or without its electrical components fitted depending on your requirements.

Flexfast Light

The Flexfast Light combines all the features of the proven Flexfast tensioning system plus it is 25% lighter in weight and lower in price. The new design, which can be manufactured up to 1.8m in height, will be advantageous during the sign erection process, making it easier for you to handle, transport and maintain.



the sign company's company

materials supply | signs & display | print hardware

Grove Works
Barnard Castle
Co. Durham
DL12 8JG

www.williamsmith.co.uk
info@williamsmith.co.uk
Tel 01833 690305
Fax 01833 637268